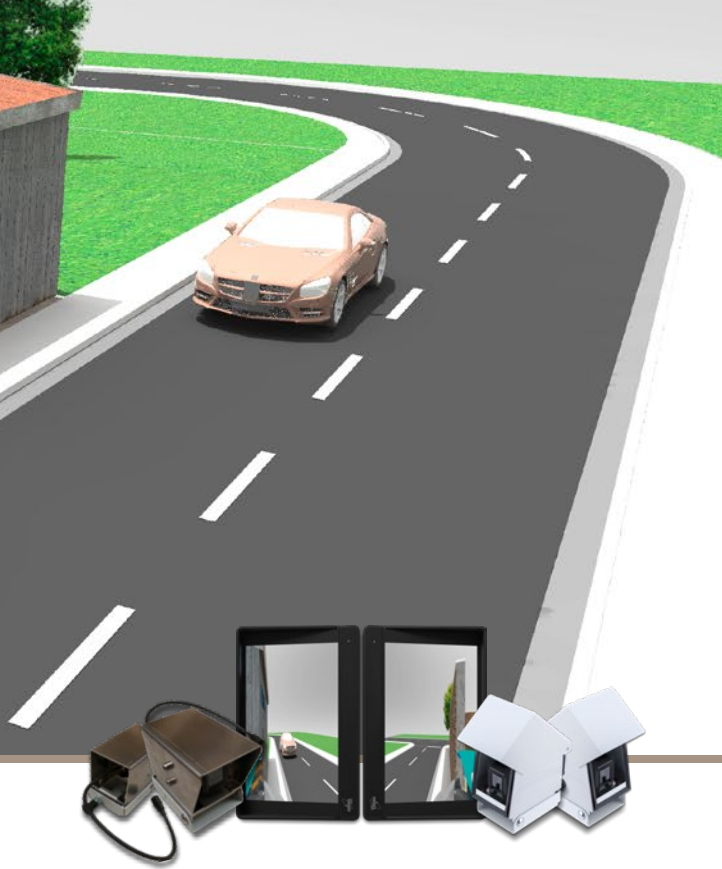




Cross-Traffic Camera-Monitor System

Certified by TÜV, DLG, and DEKRA



Basic and Professional

- Large aperture angle provides visibility of sharp-angled intersections, including slopes.
- Monitor features mechanical keyboard cover to prevent inadvertent operation.

Professional

- Cameras are integrated into a dust and splash-proof enclosure with hinged lid.
- Enclosure and camera equipped with temperature controlled heater for winter service.
- Functional safety monitoring (redundancy) provided by a brightness-controlled blinking diode constantly visible on the monitor.

Providing visibility at intersections and of obscured driveways and side streets.

The cross-traffic camera monitor system (Querkamera-Monitorsystem, Q-KMS) is designed to eliminate field-of-vision limitations due to excess front-end dimensions of more than 3.5 m or when using front-mounted implements in regular traffic.

Any requirements regarding functionality, operation, image quality, and display are met, as long as our camera monitor system is installed in accordance with the relevant recommendations provided by the German Federal Ministry of Transport and Digital Infrastructure (see Verkehrsblatt 23/2016-180).

Our vision ... is safety!

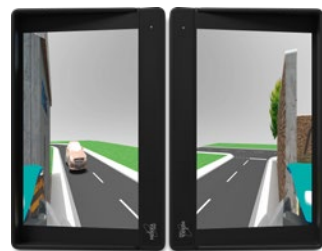
BASIC



CMOS Camera

Aperture angle	70°
Operating voltage	10 - 36 V
Dimensions	65 mm x 59 mm x 50 mm
Vibration resistance	50 G
Video format	PAL or NTSC
Temperature range	-40 °C to +85 °C
Protection class	IP 69 K

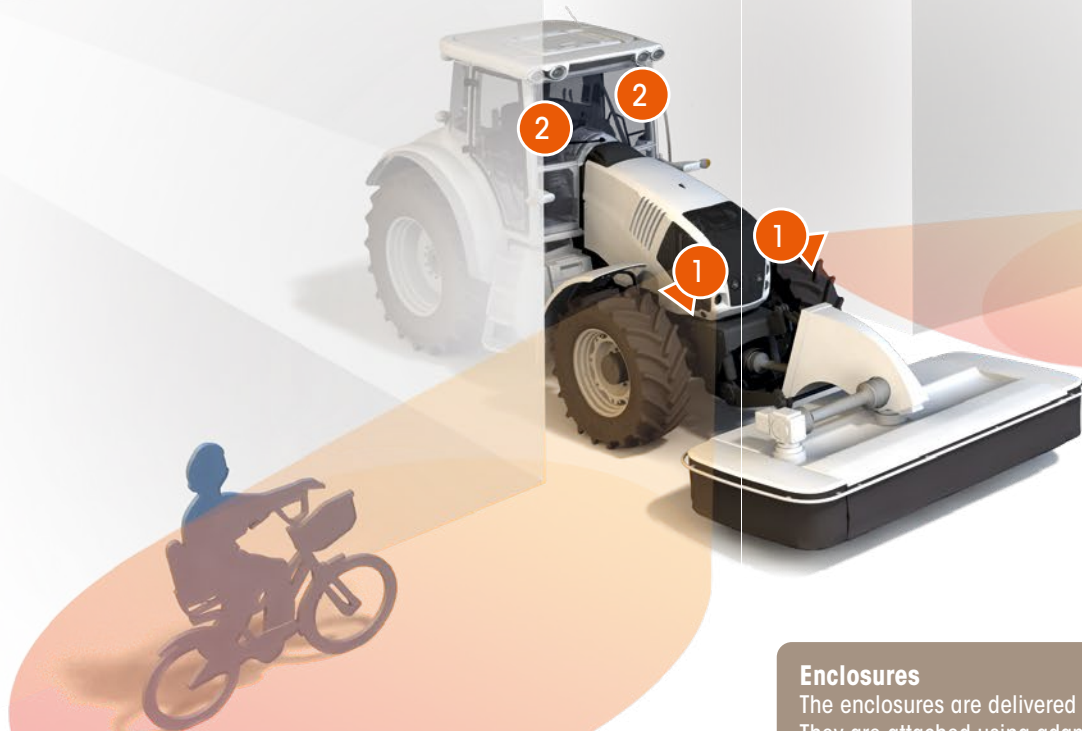
1



7" MEKRA LED Monitor

Resolution	800 x 480 Pixels
Operating voltage	9 - 36 V
Video format	PAL/NTSC (automatic)
Camera inputs	4, split screen available
Aspect ratio	7"/16:9
Day/night switching	automatic, sensor-based
Power consumption	about 10 W
Protection class	IP 65

2



Enclosures
The enclosures are delivered with cameras pre-installed. They are attached using adapter plates. An additional steadily blinking status LED in the enclosures indicates system readiness

Control Unit
The control unit is used to operate the Q-KMS. Pressing the control push button will open the enclosures, and the monitors automatically switch to the cross-traffic camera image.

PROFESSIONAL



Enclosures

Operating voltage	12 V
Weight	approx. 950 g
Dimensions	145 mm x 103 mm x 125 mm
Temperature range	-40 °C to +85 °C
Material	Powder-coated aluminum and stainless steel
Heater	on at < 5 °C, off at > 9 °C



Control Unit

Operating voltage	12 V
Protection class	IP 65
Dimensions	163 mm x 60 mm x 35 mm
Temperature range	-40 °C to +85 °C
Connecting cable	2.5 m

Contact:



MEKRA tronics GmbH

Buchheimer Str. 4
91465 Ergersheim
Germany

info@mekratronics.de

www.mekratronics.de

